

VisiWeb™

Remote Video Reviewing Capability

VisiWeb is a web-enabled viewer allowing anyone, using any web browser, to view the right of way images via an internet/intranet connection. Remote or infrequent users can access ARAN collected video images stored on the client's network server. VisiWeb is the ideal solution for inter-office and remote location deployment of videolog information and images.

Video is stored as thumbnail images on a Web server, and using an internet browser, the user can specify the road location by county, route number, section, etc. and jump immediately to that location. Once the specific location of interest is found, the user then clicks on the thumbnail image to download the full size version. A subset of the delivered sensor data (IRI, rutting, faulting, etc.) and distress data is available and can be displayed for each image or set of images.

VisiWeb also provides the capability to launch the viewer to any road section from a third party application (such as a GIS) based on section-milepoint or geographic coordinates.

VisiWeb's enhanced mapping functionality, through the integration of the Virtual Earth™ mapping engine, allows for better visualization of the location of right-of-way images and road network data. As the right-of-way video plays, Virtual Earth advances coordinating ortho images of the location in the direction of travel, updating the map location simultaneously.

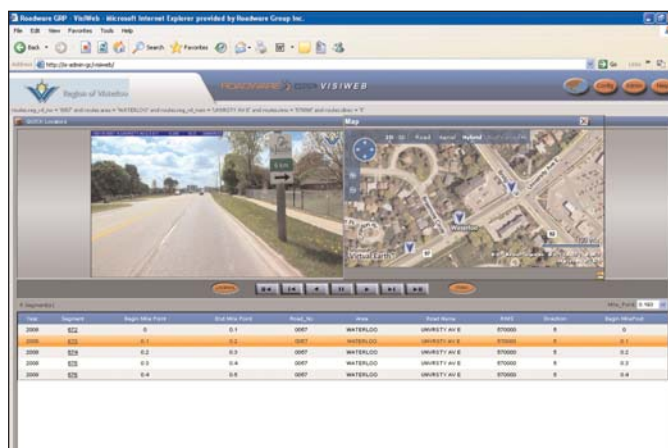
VISIWEB SOFTWARE REQUIREMENTS

Server

Windows Server 2000 or later
 SQL Server 2000/2005 or Oracle 10g
 .NET Framework v2.0
 IIS
 AJAX 1.0
 VisiWeb software

Client (each user who wants to access VisiWeb)

Internet Explorer v6.0 or v7.0
 Firefox v1.5 or later



Pictured here: Screen from VisiWeb with HDTV video image and Virtual Earth map, as seen in Internet Explorer v6.0

Features

- Access to images for remote or infrequent users
- Video stored as thumbnail images on server
- Roadway data can be displayed with images
- Images can be accessed from third party applications such as a GIS or PMS
- Easy access to full size images by clicking on thumbnails
- Enhanced mapping functionality with integrated Virtual Earth maps
- Better visualization of the location of right-of-way images and road network data while "driving" the network