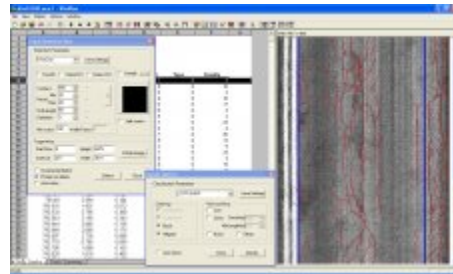




June 2007

WiseCrax and 1 mm Pavement Imaging: A Perfect Match

Roadware's WiseCrax automated pavement distress analysis application is the industry's first and only commercially-proven distress rating solution. At its release in 1995, WiseCrax was truly groundbreaking technology, and more than ten years later WiseCrax is still the most widely used,



objective, precise and repeatable method for automated cracking analysis. WiseCrax is in the solution of choice for more than 25 roadway agencies globally.

With the recent introduction of 1 mm resolution (line scan) pavement imaging, WiseCrax is now better than ever at providing accurate, repeatable and objective analysis of pavement condition.

How it Works

WiseCrax uses proprietary pattern recognition algorithms to locate, classify, and measure the extent and severity of cracking distresses recorded in orthogonal pavement images. Reports are produced describing crack type, severity, extent and location, and crack maps of the pavement surface are generated.

Additional processing efficiency and algorithm performance can be obtained through the use of Roadware's proprietary WiseCrax hardware acceleration solution which can be installed on the Client's workstation(s).

Features

- Allows for automated, as well as interactive, modes of operation
- Detects and analyzes cracks as small as 1 mm (0.03 in.)
- Reports crack type, severity, extent and location
- Prepares crack maps automatically

Key Benefits

- Early crack detection allows for early intervention
- Removes the subjectivity from pavement distress analysis
- Repeatable and reliable results year over year
- Flexible and configurable to a variety of protocols including AASHTO, SCANNER and LTPP (SHRP)

Line scan pavement imaging and WiseCrax can increase the effectiveness of your agency's pavement management program. For product details and Client references please visit [our website](#). Give us a call at 800-828-2726, e-mail us at info@roadware.com, or speak with us at the [APWA International Public Works Congress](#) or at [other conferences](#) we will be attending to discuss your requirements in more detail.

A promotional graphic for Roadware, split into two vertical panels. The left panel has a dark, textured background and contains the text: "Roadware is the world's leading provider of data collection equipment and services for the roadway management sector". The right panel has a solid orange background and contains the text: "Products and services include:" followed by a bulleted list: "Automated data collection and analysis services" (with sub-points "for asset management applications" and "for pavement management applications") and "ARAN automated data collection equipment".

Roadware is the world's leading provider of data collection equipment and services for the roadway management sector

Products and services include:

- Automated data collection and analysis services
 - for asset management applications
 - for pavement management applications
- ARAN automated data collection equipment

Copyright © 2007 Roadware Group Inc.

If you wish to be removed from our distribution list, send a note to newsletter@roadware.com