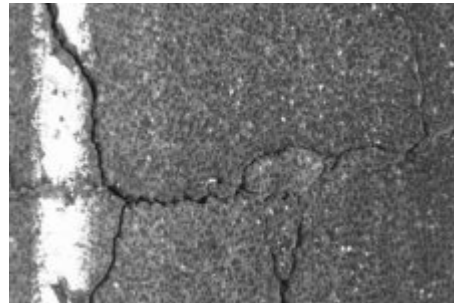




November 2006

What a Difference a Millimeter Makes!

Roadware Clients are rapidly discovering what a difference a millimeter can make. Roadware's linescan pavement video system is a step ahead of conventional (area scan) pavement image capture systems. The dual linescan cameras and laser lighting system produce a crisp, high resolution image of the roadway lane, in which cracks as small as 1 mm can be automatically detected and rated when used in conjunction with Roadware's WiseCrax software. Even cracks smaller than 1mm can be detected with the human eye, when images are analyzed with Roadware's D/V-Rate software.



Linescan Pavement Video

The linescan system yields images with four times the information than previous configurations and uses a narrow spectrum (non-visible) infrared lighting system as opposed to conventional broad spectrum strobe lighting systems. The result is greater contrast for superior visibility of cracking, even in full sunlight, less power consumption, and less heat generated within the system enclosure.

Features:

- Resolution of 4000 pixels per 1mm across a 4 m lane width.
- Dual infrared lighting arrays.
- JPEG format image output.
- Mounted within the width of the vehicle.
- Operating speeds of up to 100 km/h (60 mph), no low speed limit.
- Seamless transition at street corner turning.
- Can be used with Roadware's WiseCrax (automated) or D/V-Rate (semi-automated) pavement rating software.

Benefits:

- Continuous capture of pavement images across the full width of the lane; no gaps in the pavement image.
- Superior visibility of pavement cracking in all lighting conditions (even full sunlight).
- More accurate record of the actual distress present on the roadway due to higher resolution images.
- Improved pavement management decision making through more accurate quantification of pavement surface distress.
- Less heat generated in the ARAN due to infrared lighting system.

New ARANs can be outfitted with the linescan pavement video system, and existing ARANs can be easily upgraded to allow the linescan system to operate in concert with all other onboard ARAN systems.

Linescan Pavement Video Systems Hit the Market

Roadware has just completed a new ARAN with the linescan pavement system for the public works agency in the Netherlands (Rijkswaterstaat), and is in the process of building a new ARAN, complete with the linescan system, for the Danish Road Directorate. Additionally, we are now in negotiations with a third customer to deliver Roadware's first linescan system in the US. Roadware will also be making this new technology available on some of its Data Collection Service Fleet Vehicles for upcoming service contracts.

Click this link for more information on Roadware's [pavement video options](#). Please contact us at 800-828-2726 or info@roadware.com, or see us at the 86th TRB Annual Meeting in Washington, DC www.roadware.com/conferences to discuss your requirements.

Roadware is the world's leading provider of data collection equipment and services for the roadway management sector

Products and services include:

- Automated data collection and analysis services
 - for asset management applications
 - for pavement management applications
- ARAN automated data collection equipment

Copyright © 2006 Roadware Group Inc.

If you wish to be removed from our distribution list, send a note to newsletter@roadware.com